



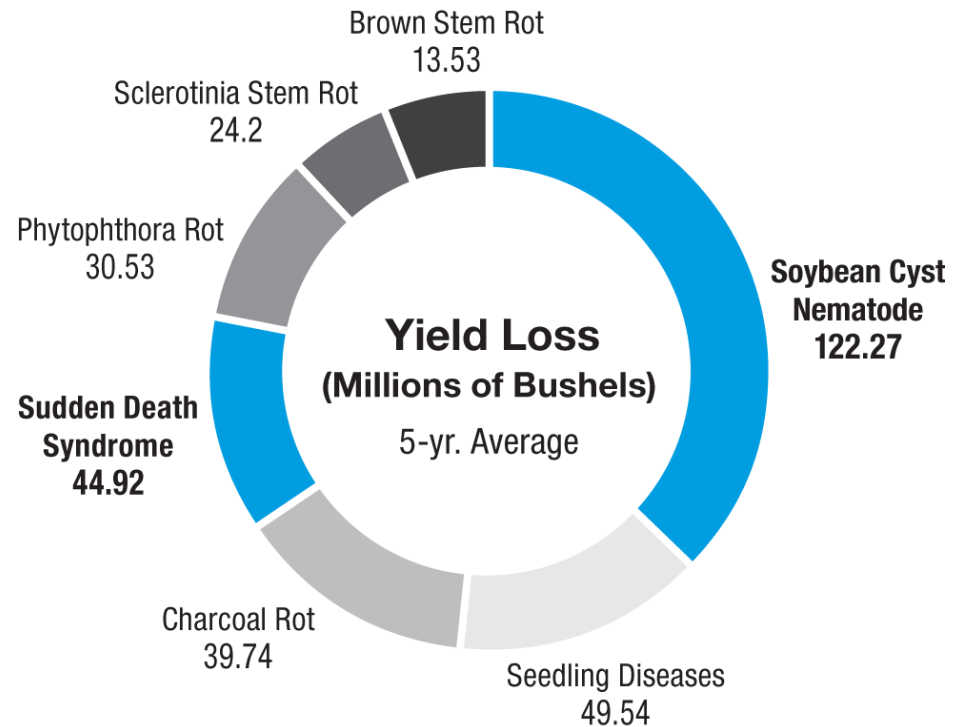
Bayer SeedGrowth™

2017 Meetings

ILeVO

SDS and SCN continue to be top contributors to soybean yield loss

- Sudden Death Syndrome (SDS) and Soybean Cyst Nematode (SCN) accounted for over **153 million bushels of yield loss in 2015***
- SCN can cause yield losses of up to 30% without any visual signs of a problem
- SDS and SCN have been documented in almost every state where soybeans are grown



Source: "Estimates of Soybean Yield Reductions Caused by Diseases in the United States," United Soybean Board, http://extension.cropsciences.illinois.edu/fieldcrops/diseases/yield_reductions.php

SDS Leaf Necrosis



ILeVO protects against both SDS & SCN to help optimize seed performance

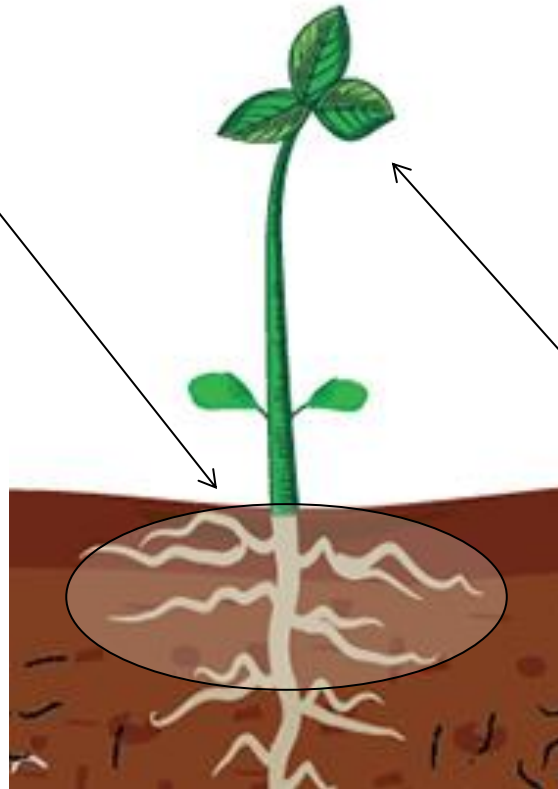
- ILeVO is the first soybean seed treatment product that offers protection against Sudden Death Syndrome and nematodes in the seed zone.

Root Rot Phase of SDS

- Controls *Fusarium* Root Rot, the causal agent of SDS, from the moment of planting

Nematodes

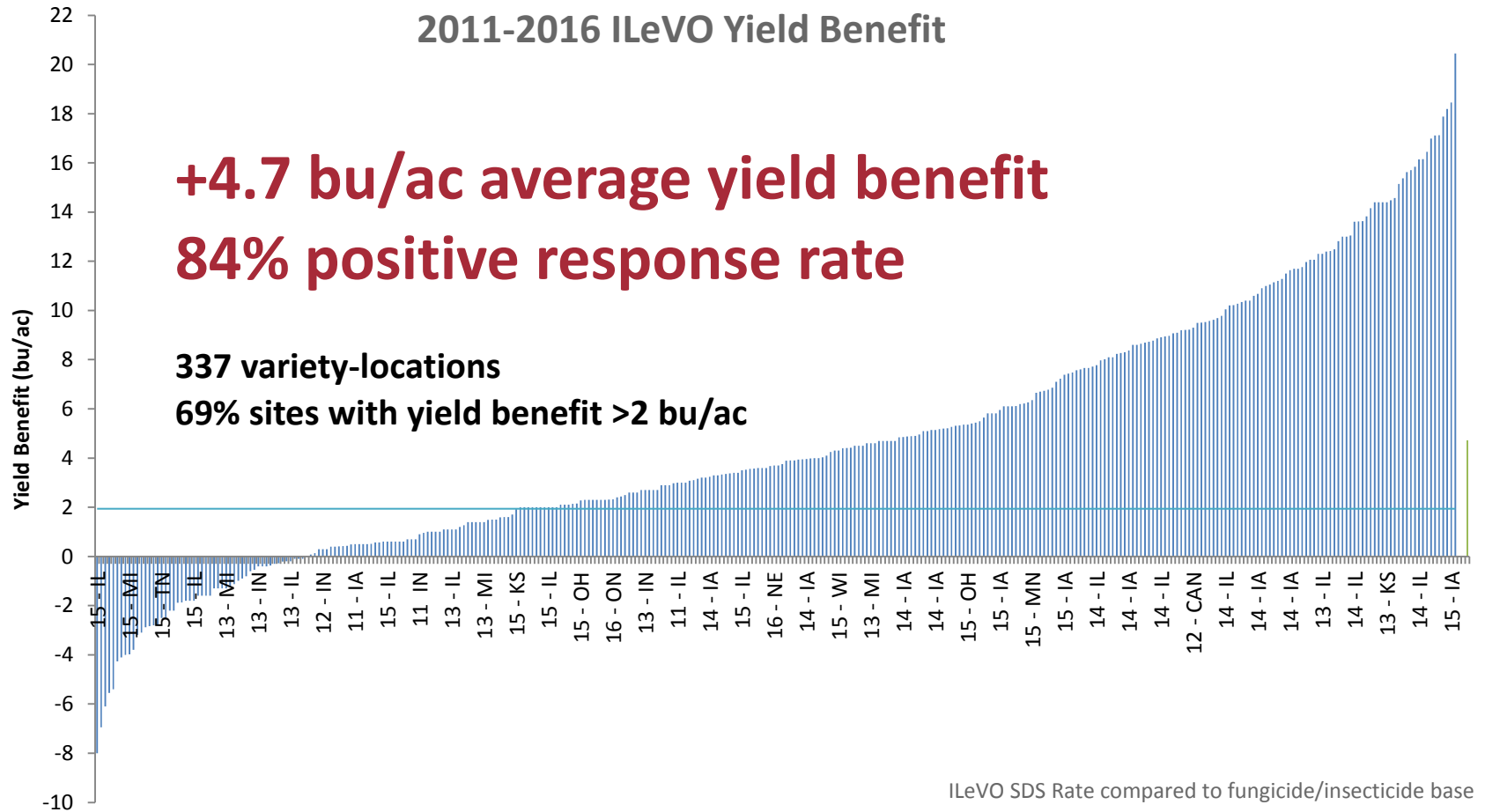
- Offers broad-spectrum protection against nematodes, including SCN, in the seed zone



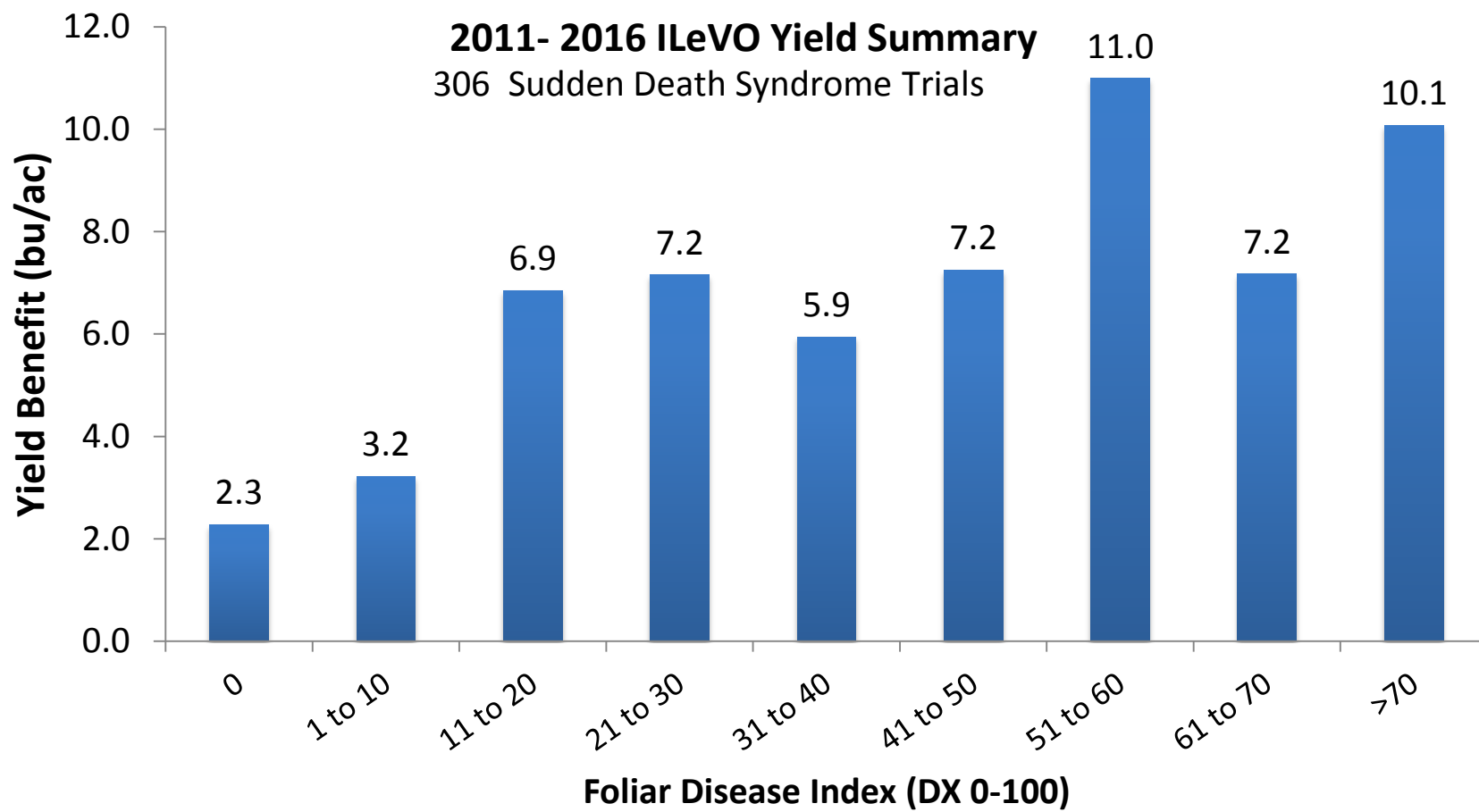
Foliar Symptoms of SDS

- Protects plants from SDS all season, reducing foliar symptoms

ILeVO demonstrates consistent yield benefit over multiple years



ILeVO provides yield benefit across fields with varying levels of disease



ILeVO provides yield benefit to both tolerant and susceptible varieties

SDS-Tolerant Variety

SDS-Susceptible Variety

64.3 bu

55.9 bu

59.7 bu

51.6 bu

+ 8.4 bu/acre

+ 8.1 bu/acre

Base +

IleVO[®]

Base Treatment

Base +

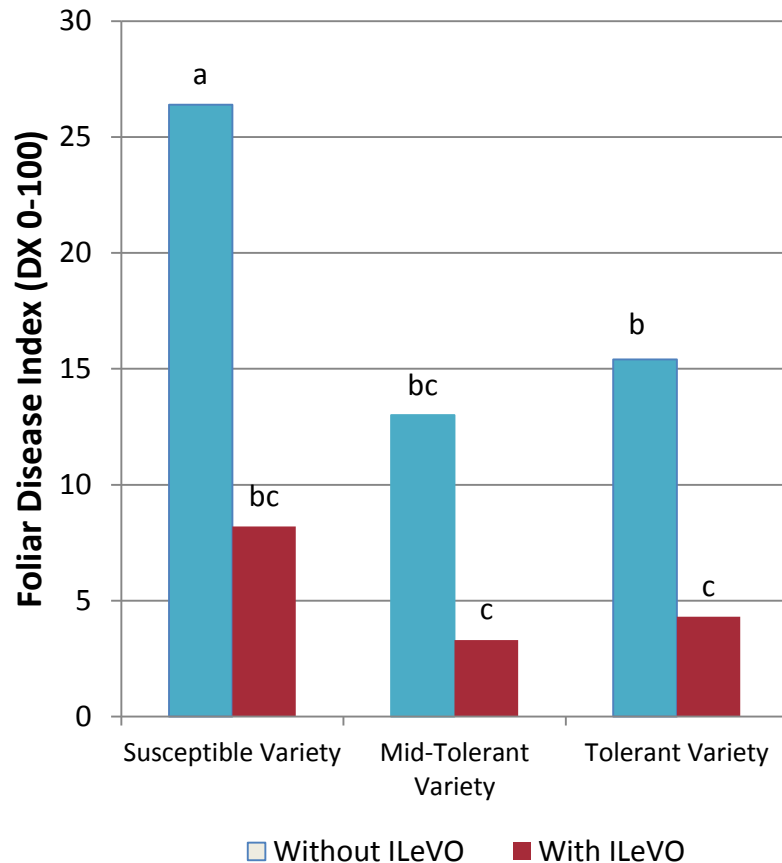
IleVO[®]

Base Treatment

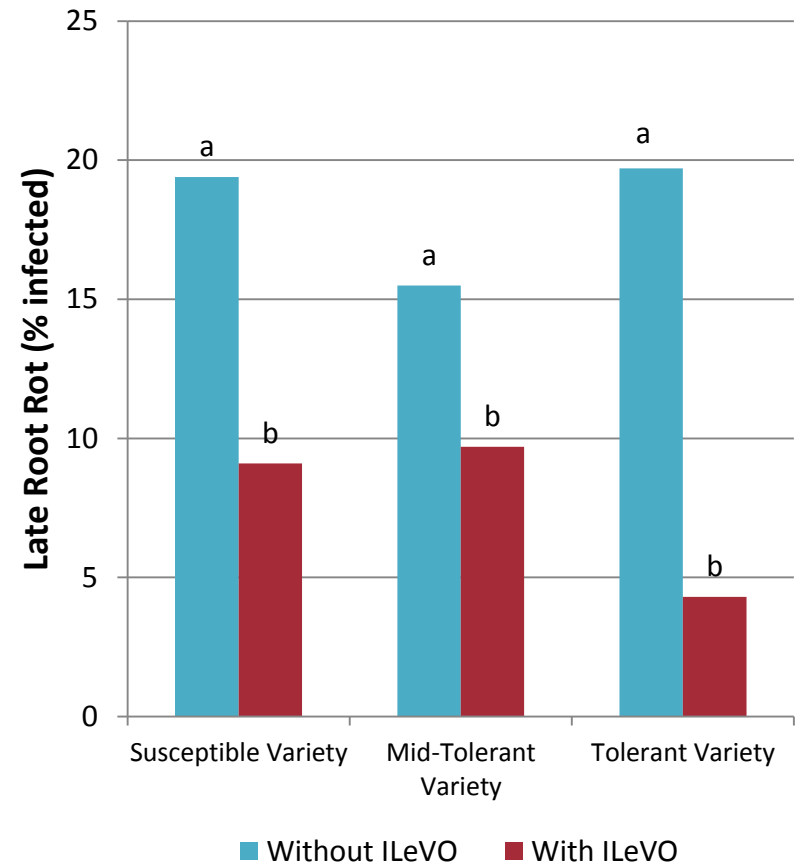
ILeVO is the only effective solution for Foliar and Root Rot phases of

SDS

Foliar SDS is reduced with variety and ILeVO



Root Rot infection is only reduced with ILeVO



ILeVO reduces Root Rot by 50%

Average 50% reduction in Root Rot across all showcase trials

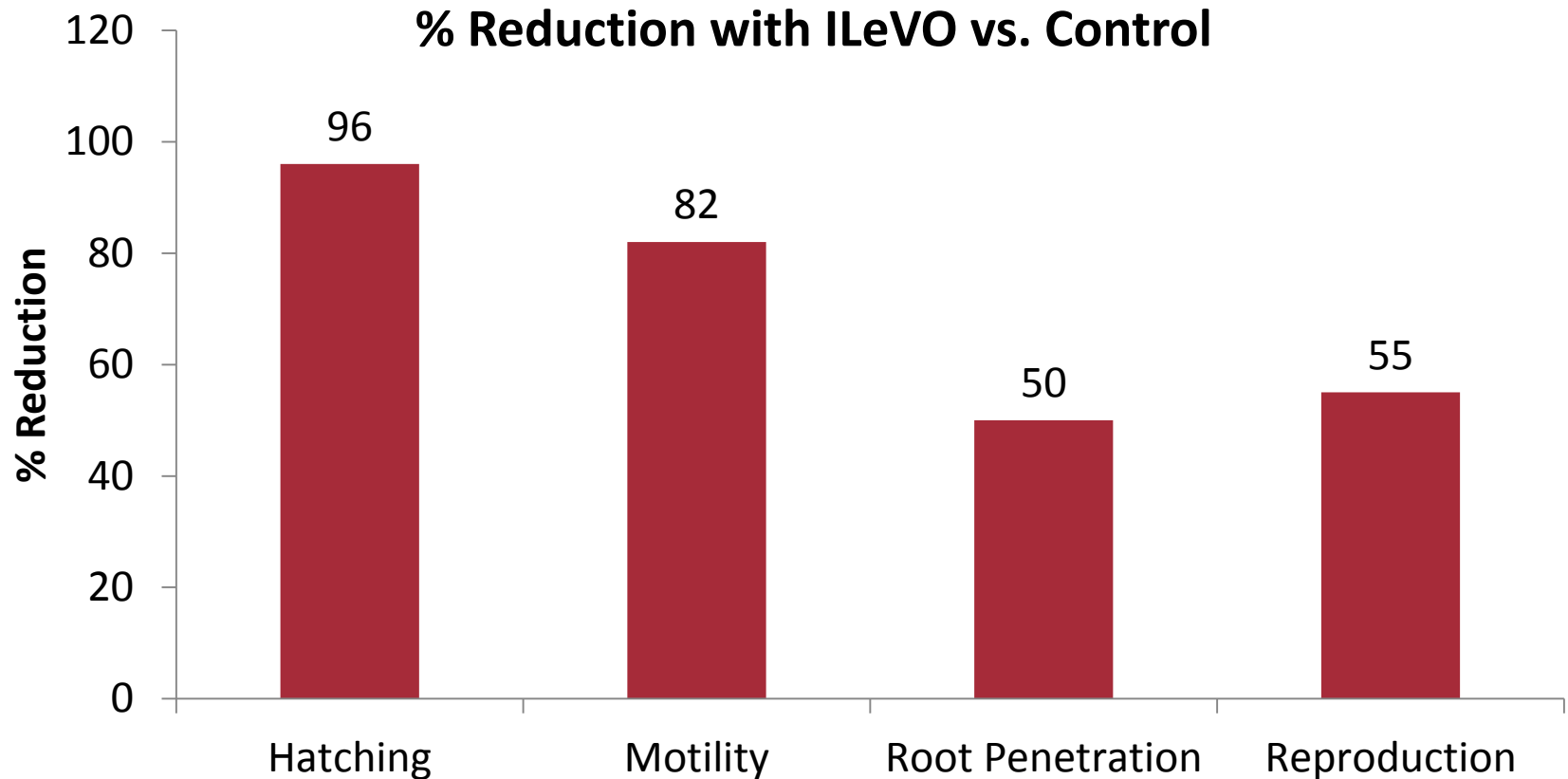
Base: 20% Root Rot



ILeVO: 10% Root Rot



ILeVO affects multiple stages of the SCN infection cycle



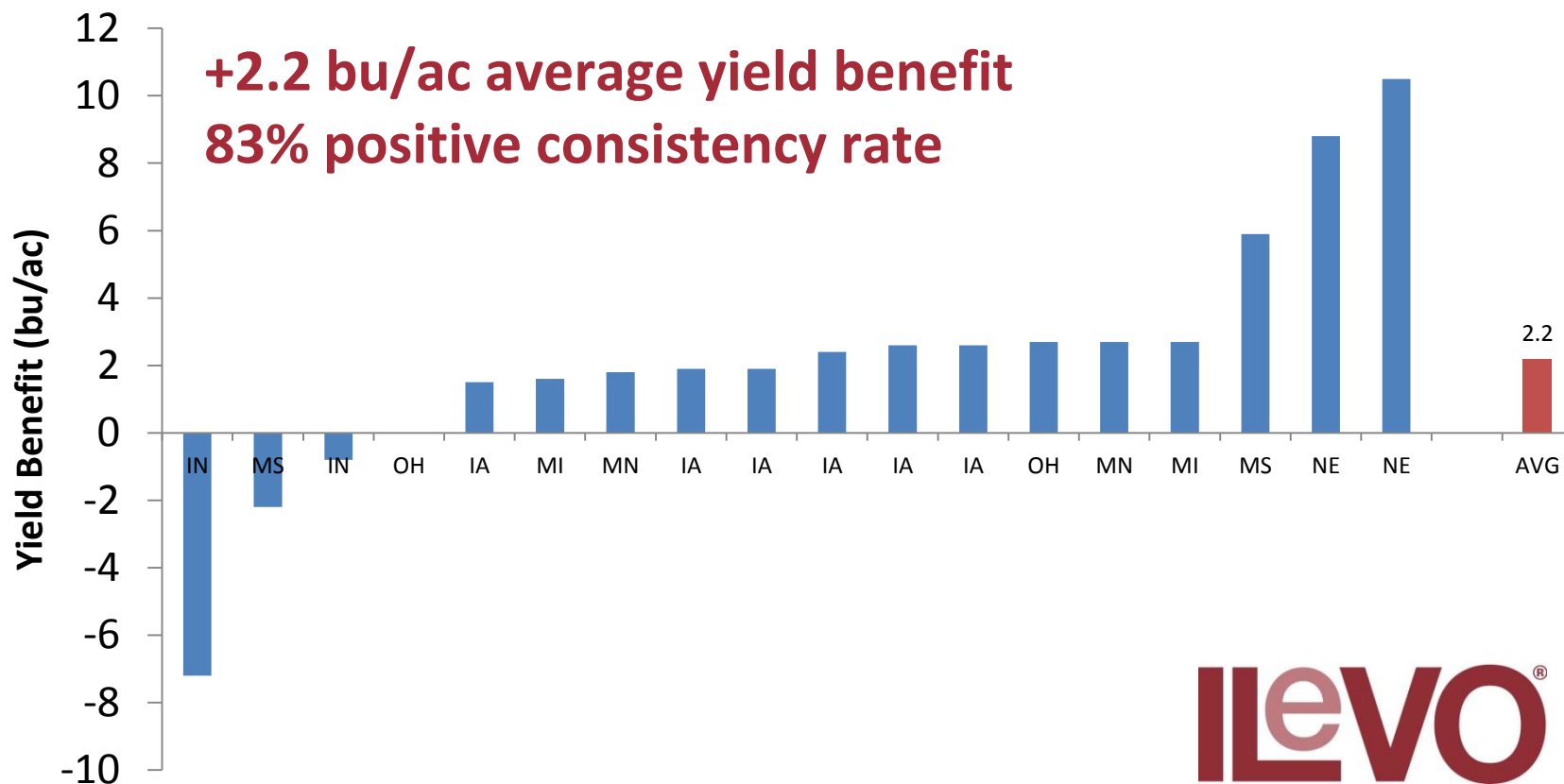
All values significant at $P < 0.05$

Data displayed for hatching & motility utilized seed exudates

University of Nebraska – Lincoln, Dr. Loren Giesler

ILeVO Yield Benefit under Nematode Pressure

2016 ILeVO Showcase Trials – Nematode Sites





Summary of Registered Pests

SDS Rate vs. Nematode Rate

Pest	ILeVO Rate	
	ILeVO SDS Rate* 0.15 mg A.I. per seed 1.18 fl. oz. per 140k unit	ILeVO Nematode Rate 0.075 mg A.I. per seed 0.60 fl. oz. per 140k unit
Sudden Death Syndrome (SDS)	Yes	Not Registered
SCN and Other Nematodes in the Seed Zone	Yes	Yes
Yield Benefit Range	2-10 bu/A depending on severity	1 – 4 bu/A
*includes suppression of early season <i>septoria</i>		

ILeVO split planter, no history of SDS Poweshiek Co, IA



Gilman, IA Last 18 bags w/o ILeVO



Split planter with ILeVO, Marshalltown, IA Twitter



Roland Showcase

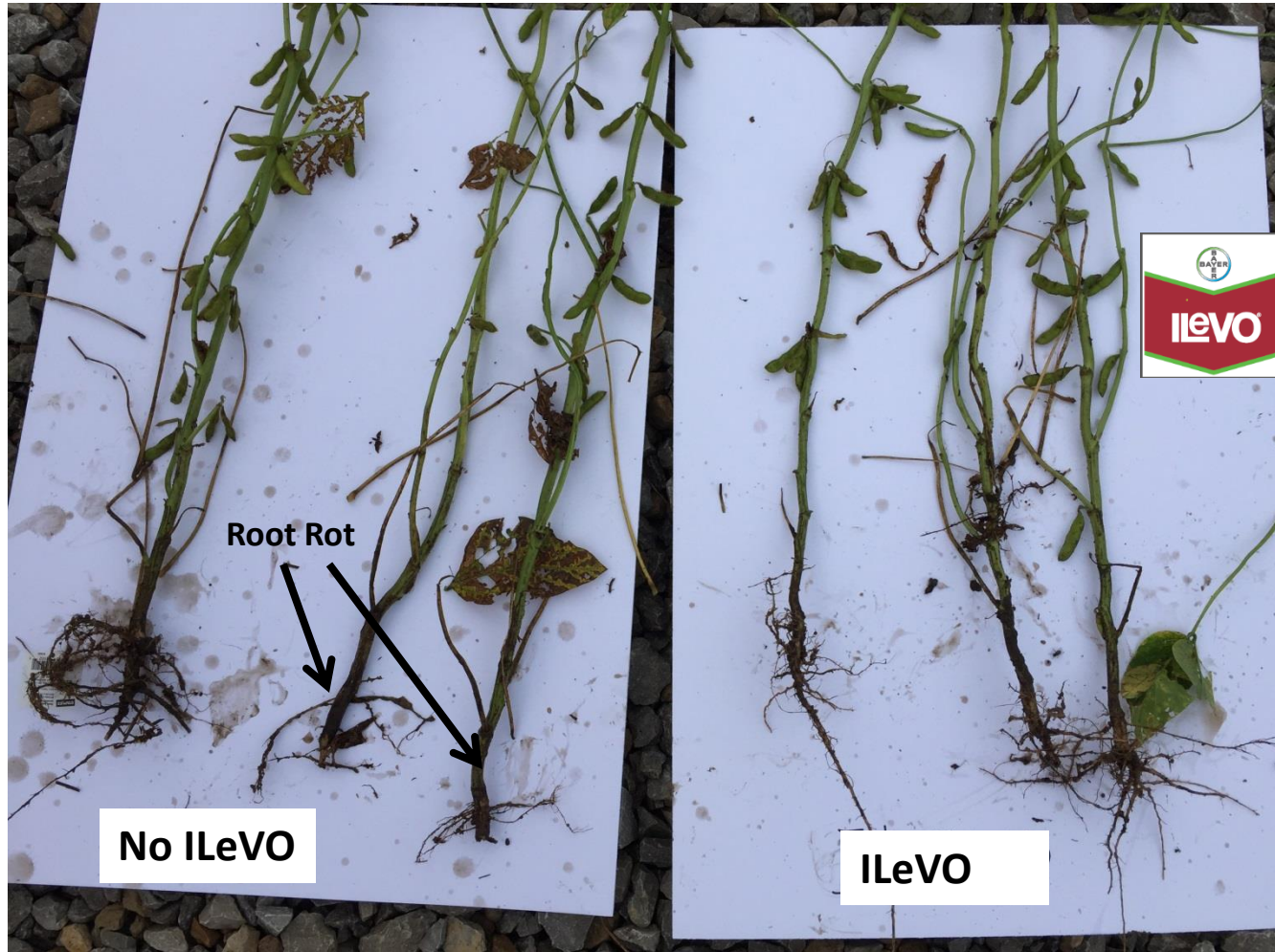
Root Rot



ILeVO Comparison, Scott County, IA



SDS Root Rot, Variety a 6 for SDS, 1-9 scale, 1= most susceptible Scott County IA

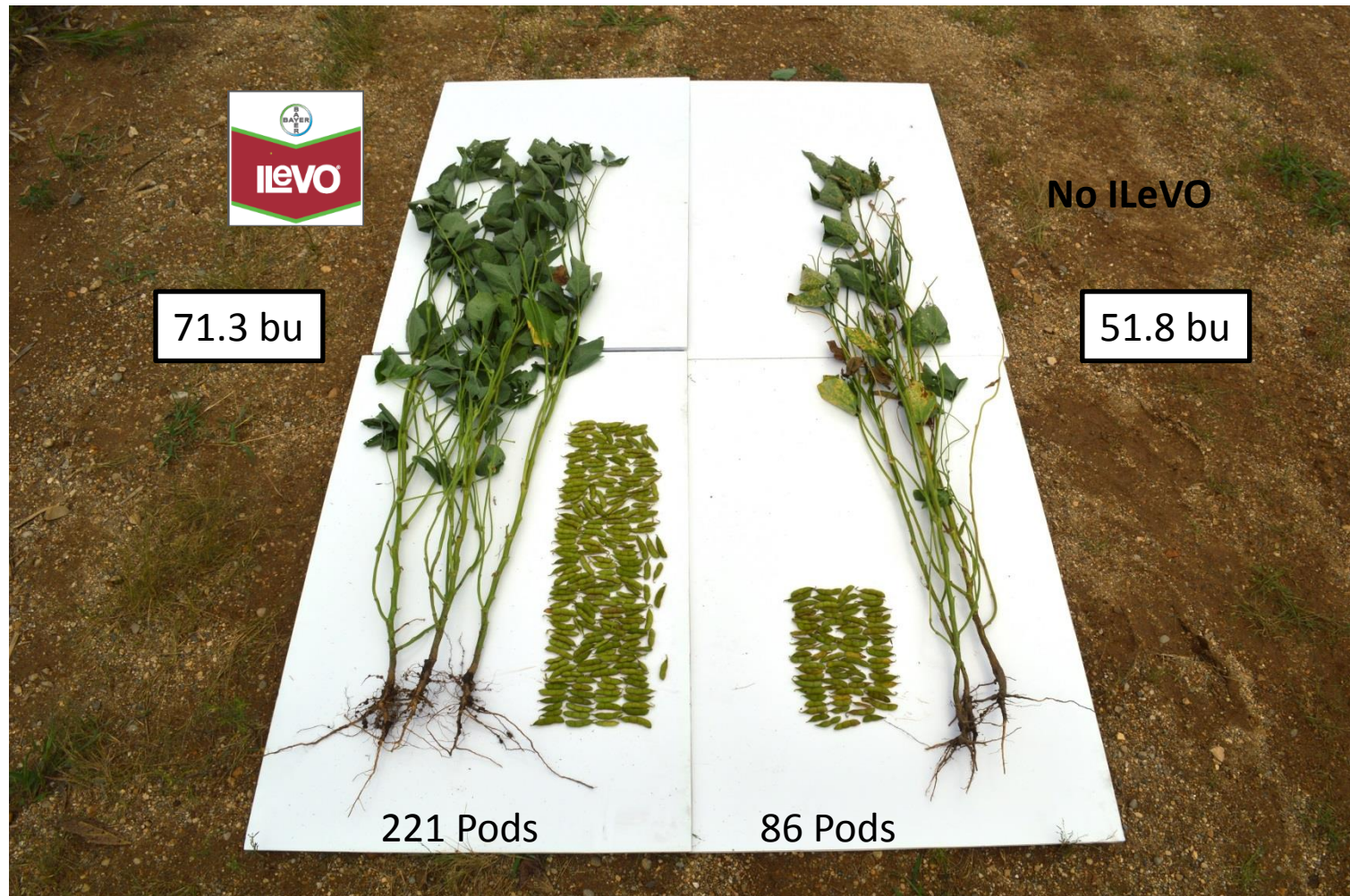


Split Planter with ILeVO Tazewell County, IL



Tazewell County, IL

ILeVO +19.5 Bushels

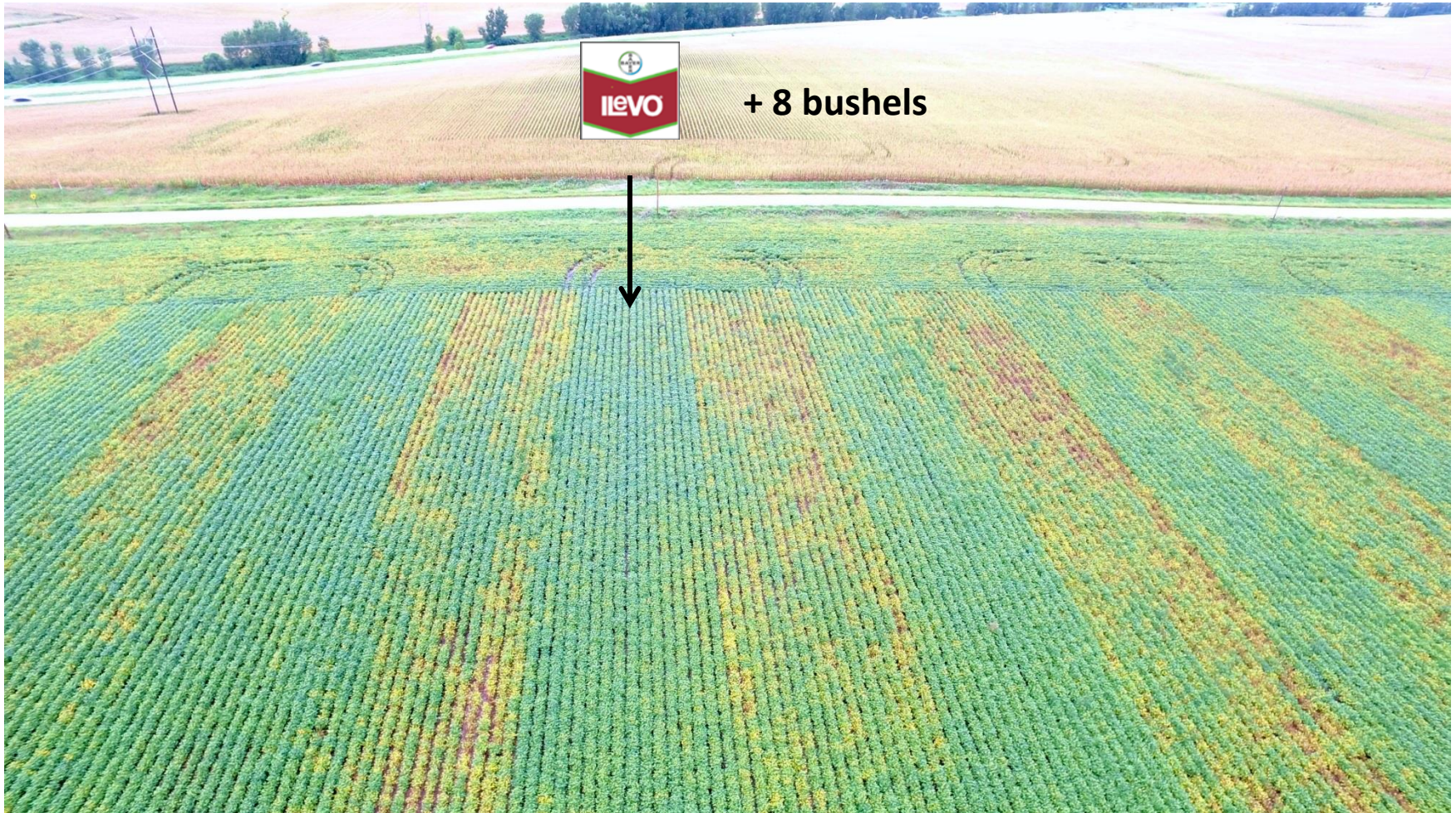


Mankato, MN

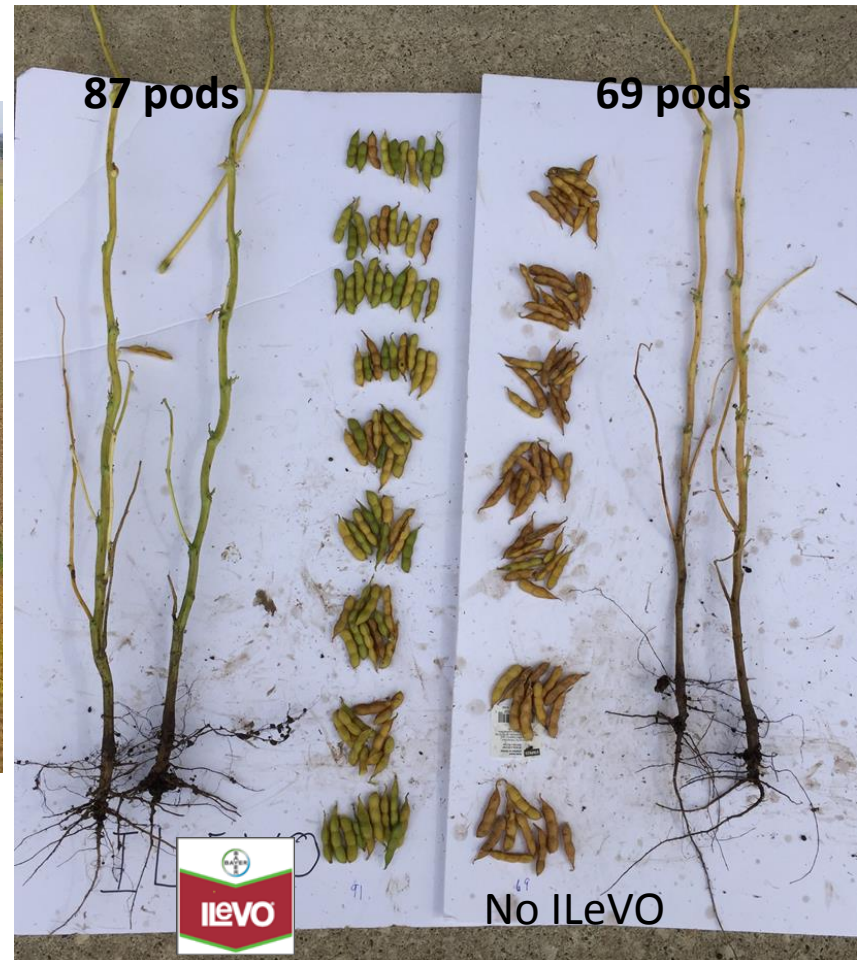
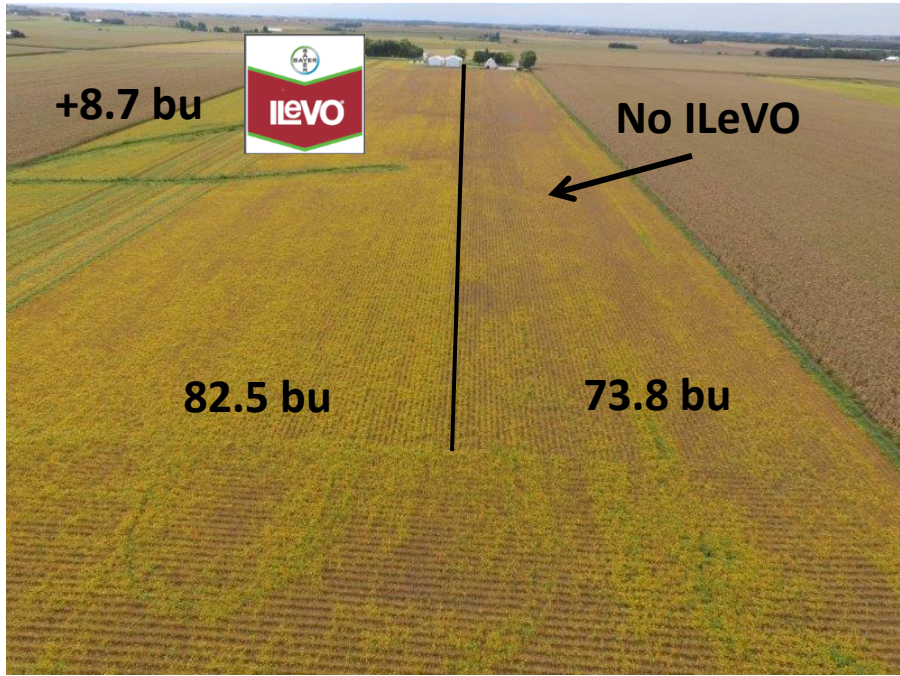
Split Planter with ILeVO



+ 8 bushels

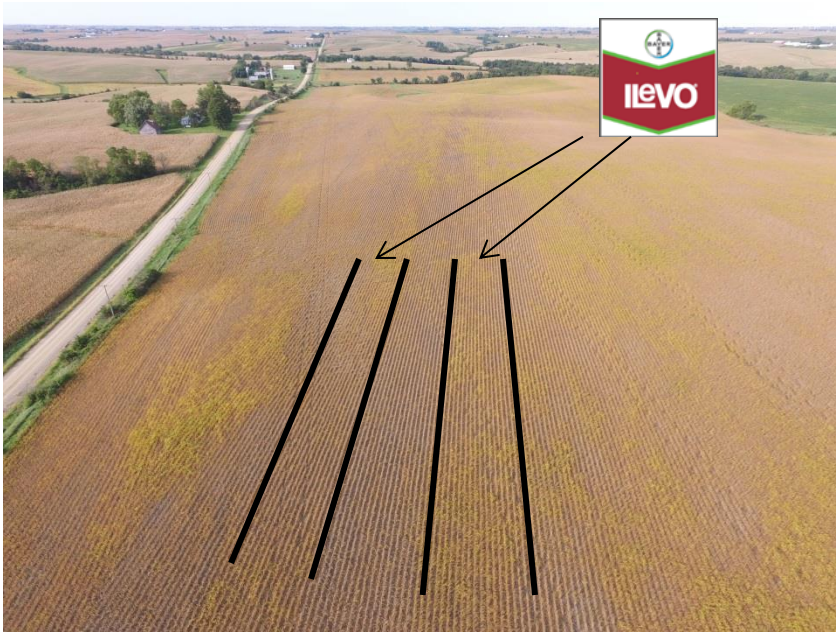


Applington, IA



Melbourne, IA

Split Planter



FS
NEW CENTURY
Melbourne, IA



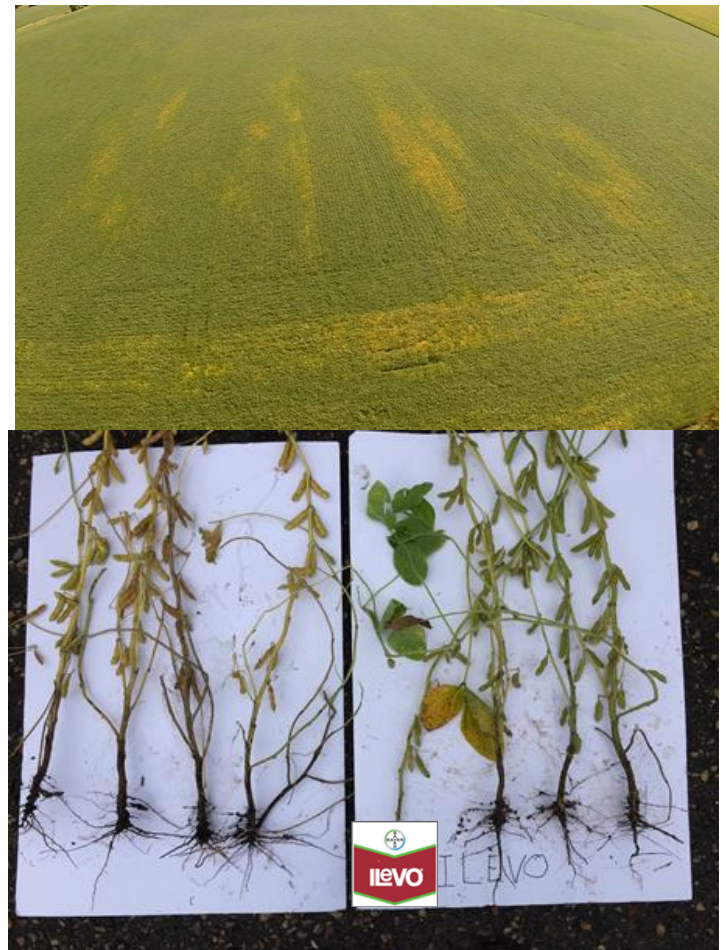
iLeVO Treated 64.9 bu./A

Untreated Check 43.9 bu./A



Belle Plaine, MN

Split Planter, ILeVO +3 bushels



Split Planter Cedar County, IA

ILeVO +10 bu!



Central IA



Yield Benefits



4-10 bu/acres when foliar SDS symptoms are present

2.0 bu/acres in the absence of foliar SDS symptoms